



PIPELINE SOLUTIONS

WE DO THAT ... & MORE

## Insight, ingenuity, innovation — always in the pipeline

Michels Pipeline, Inc. is a leading mainline pipeline, fabrication, facilities, and integrity, maintenance and repair contractor. We partner with our customers to nurture the United States' transmission systems from initial planning through decommissioning, ensuring safety and integrity on projects of all sizes, in all locations. Our full-service construction services support traditional and renewable resources. We design, build, maintain and expand all aspects of critical networks with unwavering commitment to safety, quality and environmental preservation.



## FACILITIES CONSTRUCTION

From gas compressor and liquid pumping stations to sites focused on the development of RNG, hydrogen and other renewables, Michels Pipeline installs and maintains all components of pipeline facilities in all locations and climates. Our services include site development, foundations, structural steel, equipment installation, offsite prefabrication, piping, electrical, instrumentation, building erection, site restoration and demolition.

Whether working in greenfield or brownfield environments; making facility replacements, upgrades, modifications or additions; or retiring existing facilities, we have the expertise and unmatched resources to meet your environmental, safety, quality and schedule demands. Our approaches encompass design-build; engineering, procurement and construction (EPC); and construction-only models.

### Our facilities construction capabilities include:

- Compressor stations
- Horsepower additions
- Hydrogen facilities
- Liquefied natural gas (LNG) facilities
- Meter & regulator stations
- Pump stations
- Renewable natural gas (RNG) facilities
- Terminals & storage facilities
- Town border stations
- Turnkey construction, expansion & rehabilitation services



## CUSTOM FABRICATION

Michels Pipeline specializes in pipe fabrication for oil, natural gas and product pipeline construction; pump stations; compressor stations; meter and regulator stations; tank farm manifolds; launchers and receivers; mainline valve settings and double jointing. Our on-site painting and hydrotesting capabilities eliminate our customers' need for permits, access to and disposal of water and blast media, and overspray from painting.

### Our pipe fabrication capabilities include:

- Coating
- Hydrotesting
- Painting
- Takeoff & layout
- Third-party non-destructive testing (NDT)
- Welding
- ISO 9001: 2015 certified



## TRANSMISSION PIPELINE CONSTRUCTION

Michels Pipeline builds and maintains mainline oil, gas and water pipelines to meet the nation's demand for safe, reliable delivery. With a combined resume of work stretching across the United States many times over, we maintain our reputation for excellence with unflinching commitment to performing work safely and at the highest level.

### Our pipeline construction capabilities include:

- Experience in all major shale plays
- Hydrostatic testing
- Launchers & receivers
- Strategically located equipment yards
- Maintenance & emergency repairs

## INTEGRITY, MAINTENANCE & REPAIRS

Michels Pipeline works throughout the country to provide maintenance and repair services necessary for safe and reliable oil and gas pipelines. Backed by qualified people and heavy equipment, we provide an experienced team prepared to accommodate both scheduled projects and unanticipated needs.

### Our integrity, maintenance and repairs capabilities include:

- Anomaly investigation & repair
- Blasting & recoating
- Corrosion repair
- Class changes
- Clockspring techniques
- Cutout work
- Inline inspection
- Line lowering/relocating
- Line retirements
- Line reversals
- Pipeline abandonments
- Pressure testing (air, hydrostatic, nitrogen)
- Relocations & interconnects
- Sleeve installation
- Valve replacing

## ENVIRONMENTAL SERVICES

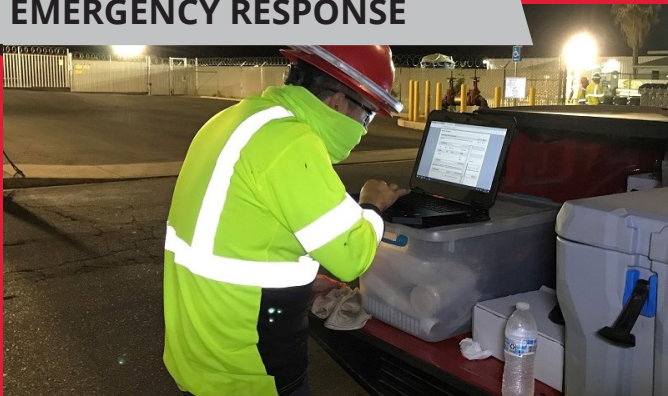
Michels Pipeline understands that life requires energy. Beyond serving society by providing the means to move life-sustaining resources from generation plants through distribution to endpoint users, we pledge to work responsibly and respectfully with regard to the environment.

### Our environmental services capabilities include:

- Aerial crossings remediation
- Bladder dams
- Cofferdams
- Erosion control
- Habitat restoration
- Native seed restoration
- Slip remediation
- Stream bank stabilization
- Wetland & swamp construction



## EMERGENCY RESPONSE



Michels Pipeline's rapid-response crews and equipment are deployed wherever needed to restore compromised pipeline, facilities and infrastructure—24/7. Pre-negotiated contracts, encompassing scenarios up to HAZMAT response, allow our teams to get to work quickly.

## We Do That

Custom pipe fabrication  
Environmental services  
Facilities construction  
Integrity, maintenance & repair  
Transmission pipeline construction

## ... & More

Access roads  
Constructability recommendations  
Design engineering  
Foundations  
GIS  
Helicopters & drones  
Horizontal directional drilling  
Joint installations  
Marine support  
Site preparation & matting  
Trenchless solutions



### Gulf Run Pipeline

Westdale, LA to Starks, LA  
2022

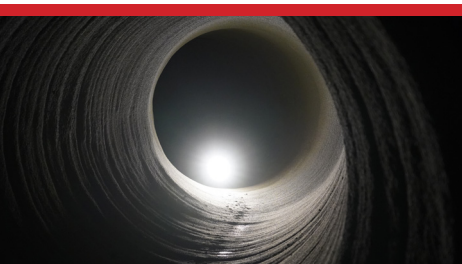
- 134 miles of 42-inch natural gas pipeline
- Four miles of trenchless installation using nine horizontal directional drills
- Hydrostatic testing
- Sheet piles for dewatering



### East 300 Upgrade Project - Compressor Station 327

West Milford, NJ  
2022-2023

- Greenfield compressor station
- 19,000-hp Solar Spartan electric motor drive (EMD)
- Ventilation and lube oil systems
- Three gas filter separators
- Four bays of high-pressure gas coolers



## WE DO THAT ... & MORE

### Water & wastewater

Did you know Michels installs and rehabilitates potable water, sanitary sewer and storm sewer systems throughout North America? Our diverse construction teams allow us to go with the flow on an array of projects in urban and rural areas.



### Line 3 Replacement

North Dakota & Minnesota  
2020-2021

- 109 miles of 36-inch liquid pipeline
- Construction of six mainline valve facilities
- Installation of six horizontal directional drills
- 97 miles of clean up & restoration work
- Completed during harsh winter conditions



### Green Meadows RNG Facility

Hilbert, WI  
2023

- First-of-its kind multi-stage renewable natural gas facility
- 15.28- acre site
- 95 percent of piping prefabricated off-site
- 30-plus pieces of equipment from Michels' world-class fleet

**MICHEL'S**<sup>®</sup>  
PIPELINE, INC.

[www.Michels.us](http://www.Michels.us)

An overview of the collective strength of the **MICHEL'S** Family of Companies



8,000 people strong



18,000 pieces of equipment

1959

founded in



50+ locations globally



ENR's Top 400 Contractors List

Visit our website to learn more about our pipeline solutions.